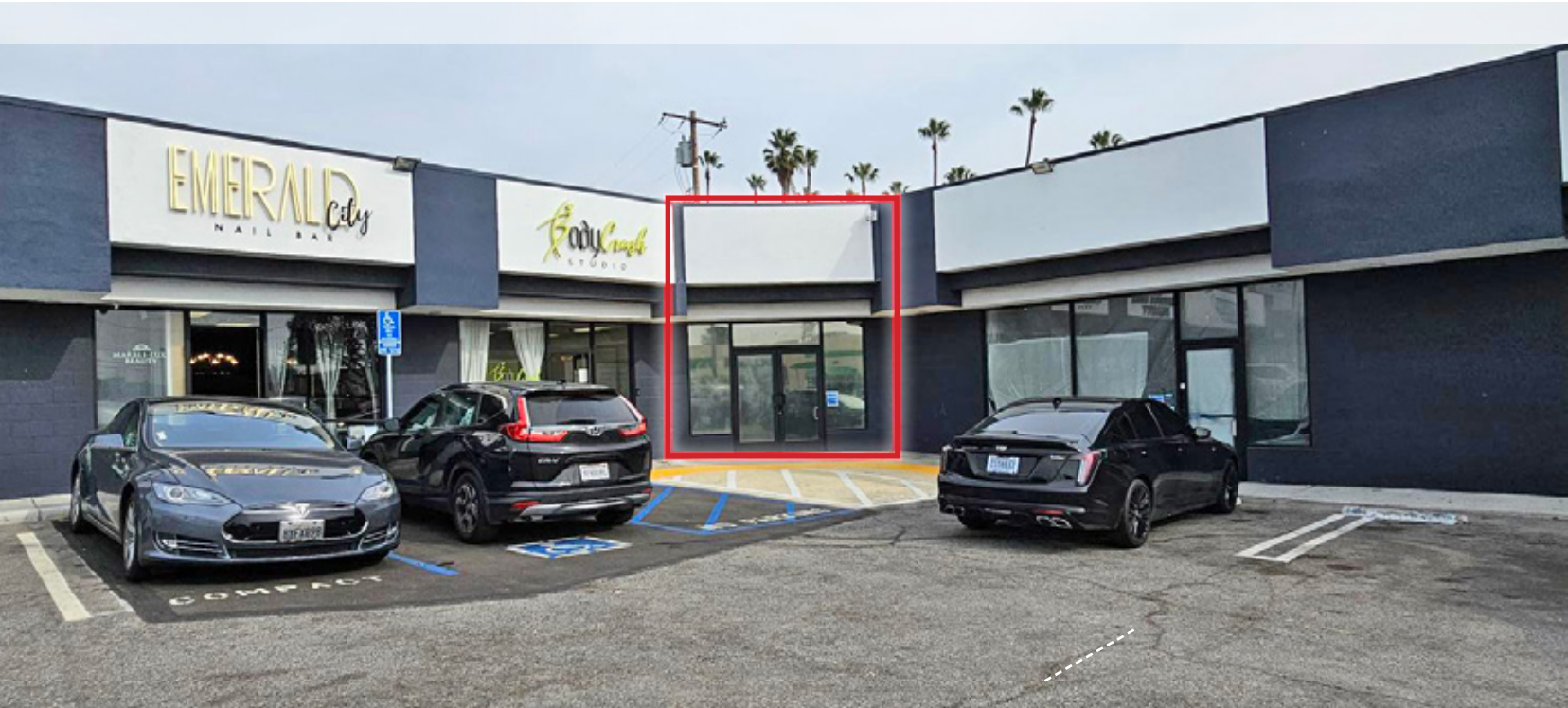




FOR LEASE

3819 W. SLAUSON AVENUE | WINDSOR HILLS, CA 90043



RETAIL STOREFRONT IN RECENTLY RENOVATED SHOPPING CENTER

PRICE: \$1.50 + \$.40 NNN

This a multi-tenant retail shopping center consisting of approximately 2,400 SF of building on an estimated 15,360 SF lot. The subject property has been recently renovated and all units are vacant. This "L" shaped shopping center is located in the heart of Windsor Hills, adjacent to the ever-gentrifying Inglewood submarket and luxurious Ladera Heights community. With a plethora of new developments coming into the area, this is an ideal opportunity to lease new retail units in a retail dominant corridor.

Features & Amenities

- ▶ Phenomenal "L" Shaped Shopping Center
- ▶ Renovated in 2021
- ▶ ±20 On-Site Parking Spaces
- ▶ Decorative Landscaping
- ▶ Low NNN costs
- ▶ Excellent Exposure and Visibility

Windsor Hills - at a glance



Total Population

1 MILE	3 MILE	5 MILE
35,669	323,402	1,057,639



Average Household Income

1 MILE	3 MILE	5 MILE
\$80,478	\$68,487	\$67,812



Average Housing Unit Value

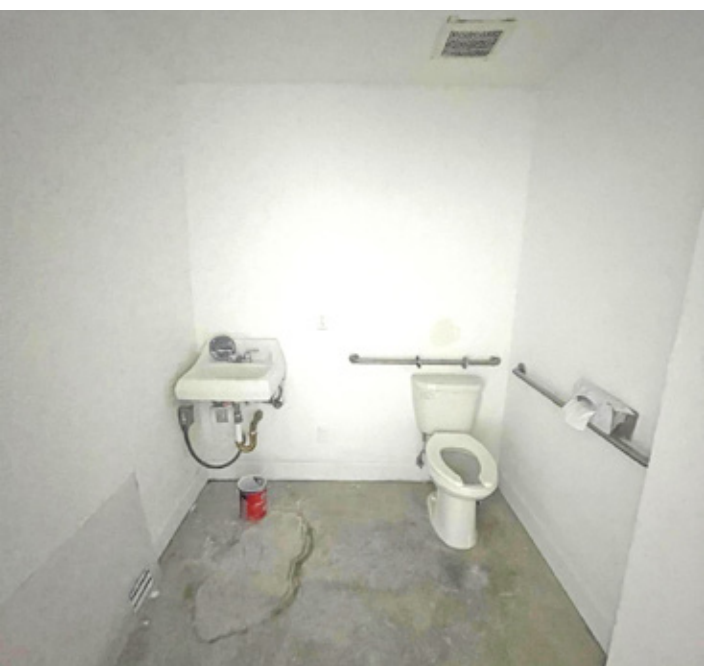
1 MILE	3 MILE	5 MILE
\$599,126	\$550,907	\$601,543



CONTACT US:

Daniel Hirth | 310.300.2838
DRE License No. 01515796

Elijah Suval | 310.300.3180
DRE License No. 02024364



CONTACT US:

Daniel Hirth | 310.300.2838
DRE License No. 01515796

Elijah Suval | 310.300.3180
DRE License No. 02024364



**±2,400 SF
AVAILABLE**

Note: Floor plan not drawn to scale.